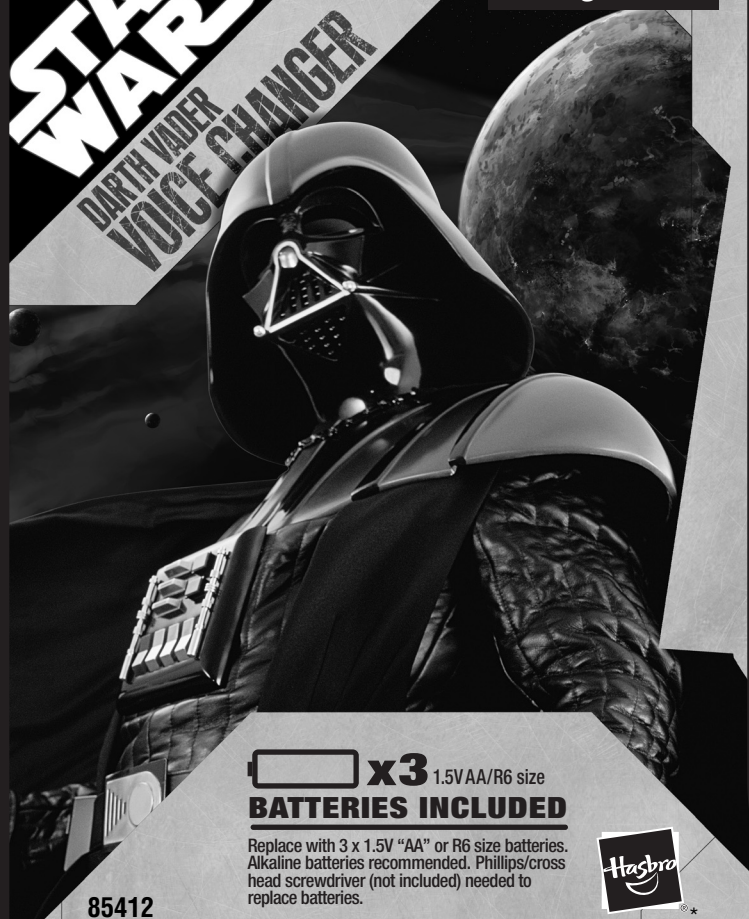


STAR WARS
DARTH VADER
VOICE CHANGER

**AGES 5
through adult**



x3 1.5V AA/R6 size
BATTERIES INCLUDED

Replace with 3 x 1.5V "AA" or R6 size batteries. Alkaline batteries recommended. Phillips/cross head screwdriver (not included) needed to replace batteries.



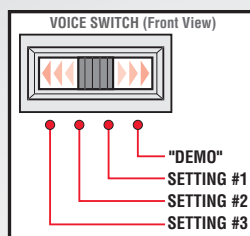
85412

IMPORTANT! PLEASE READ INSTRUCTIONS COMPLETELY BEFORE WEARING TOY.

VOICE SWITCH

The voice switch has 3 different settings and a "demo" setting. *This toy is packaged in the "demo" setting for in-store demonstration purposes.* You will need to slide the switch to any of the other 3 settings for full activation of the features. NOTE: Speech function is disabled in "demo" setting.

The mechanism helps you sound like Darth Vader. To make your voice sound even more like Vader's, try this while using the toy:



- Choose a setting: The 3 settings alter your voice in different ways. Try each setting to see which one makes your voice sound closest to the way Darth Vader sounds.
- Listen to the actual phrases to learn the pace at which Darth Vader speaks.
- Deepen your voice as you talk.
- Talk slowly and clearly.
- Speak into the microphone and get your mouth as close to the microphone as possible.

VOICE BUTTON

Wearing the helmet and chestplate, press the Voice Button and speak. Your voice will change, to sound like Darth Vader's! See the above instructions on settings and voice adjustment to fine-tune the sound.

PHRASES BUTTON

Wearing the helmet and chestplate, press the Phrase Buttons to hear Darth Vader's actual phrases from the movies!

The phrases are: "You don't know the power of the dark side."
"There is no escape."
"The Force is with you."
"Your powers are weak."
"Don't make me destroy you."

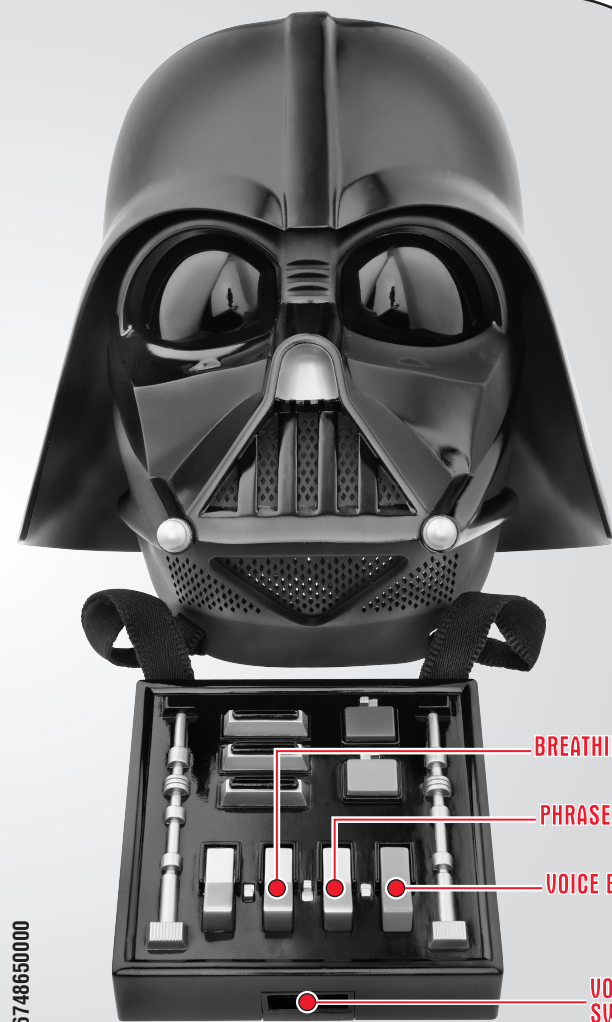
BREATHING BUTTON

Wearing the helmet and chestplate, press the Breathing Button to hear Darth Vader's actual breathing sounds from the movies!



Product and colors may vary.
© 2007 Lucasfilm Ltd. & © or TM where indicated. All rights reserved.
® and/or TM* & © 2007 Hasbro. All Rights Reserved.
© denotes Reg. U.S. Pat. & TM Office.

P/N 6748650000



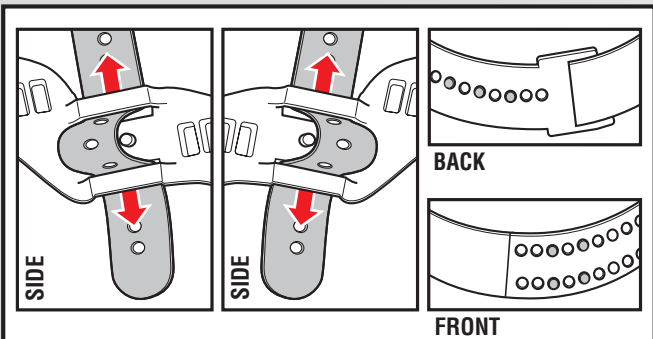
BREATHING BUTTON

PHRASES BUTTON

VOICE BUTTON

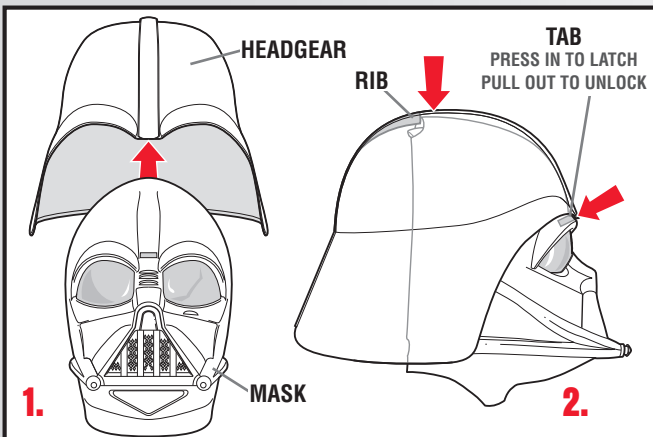
VOICE SWITCH

(See inset above)



ADJUSTABLE STRAPS

The mask has adjustable straps on the front, sides and back. To adjust, lift straps off posts, slide straps to desired position, and press straps onto posts.

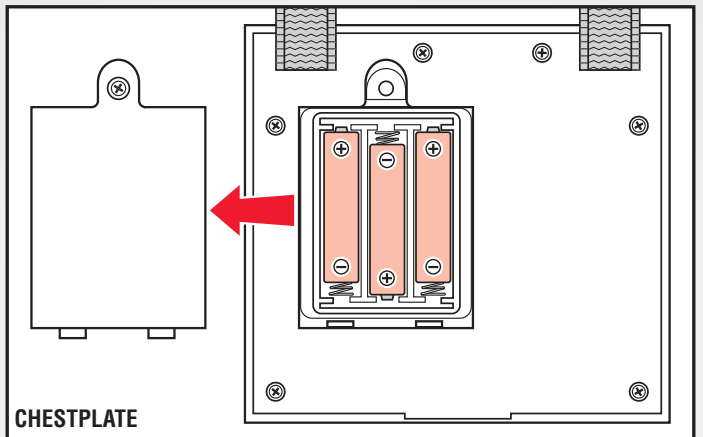


WEARING HELMET

Place mask on face. Place headgear straight down on head, aligning rib inside headgear with indentation on back of mask. Slide headgear forward until you hear a click (tab on front of headgear will lock into slot between the eyes in the mask). To remove headgear, lift tab on front of headgear.

TO REPLACE BATTERIES

Loosen screw in battery compartment door with a Phillips/cross head screwdriver (not included). Remove door. Remove and discard batteries. Insert 3 x 1.5V "AA" or R6 size batteries. Alkaline batteries recommended. Replace door, and tighten screw.



CAUTION: TO AVOID BATTERY LEAKAGE

1. Be sure to insert the batteries correctly and always follow the toy and battery manufacturers' instructions;
2. Do not mix old and new batteries or alkaline, standard (carbon-zinc) or rechargeable (nickel-cadmium) batteries;
3. Always remove weak or dead batteries from the product.

IMPORTANT: BATTERY INFORMATION

Please retain this information for future reference. Batteries should be replaced by an adult.

CAUTION:

1. Always follow the instructions carefully. Use only batteries specified and be sure to insert them correctly by matching the + and - polarity markings.
2. Do not mix old batteries and new batteries, or standard (carbon-zinc) with alkaline batteries.
3. Remove exhausted or dead batteries from the product.
4. Remove batteries if product is not to be played with for a long time.
5. Do not short-circuit the supply terminals.
6. Should this product cause, or be affected by, local electrical interference, move it away from other electrical equipment. Reset (switching off and back on again or removing and re-inserting batteries) if necessary.
7. RECHARGEABLE BATTERIES: Do not mix these with any other types of battery. Always remove from the product before recharging. Recharge batteries under adult supervision. DO NOT RECHARGE OTHER TYPES OF BATTERIES.

FCC Statement:

This equipment has been tested and found to comply with the limits for a Class B digital device, pursuant to part 15 of the FCC Rules. These limits are designed to provide reasonable protection against harmful interference in a residential installation. This equipment generates, uses and can radiate radio frequency energy, and, if not installed and used in accordance with the instructions, may cause harmful interference to radio communications. However, there is no guarantee that interference will not occur in a particular installation. If this equipment does cause harmful interference to radio or television reception, which can be determined by turning the equipment off and on, the user is encouraged to try to correct the interference by one or more of the following measures:

- Reorient or relocate the receiving antenna.
- Increase the separation between the equipment and receiver.
- Consult the dealer or an experienced radio/TV technician for help.